

SHEET No. 2
PLAN No. 1055
FOR THE IMPROVEMENT OF
RIALTO AVENUE
BETWEEN
E STREET AND D STREET
IN THE
CITY OF SAN BERNARDINO, CALIFORNIA.

MARCH 1931. A. K. Jones
 City Engineer

PLAN ADOPTED APRIL 20, 1931.

TITLE TO STREET
 See Sheet No. 1 this plan.

GRADE ESTABLISHMENT
 See Sheet No. 1 this plan.

LEGEND

- or in these feet or inches
- R means foot or feet
- W means inches
- S means center line
- Railroad and Electric car tracks shown thus in plan
- Vitrified Pipe drain to be constructed shown thus
- Type A Inlet to be constructed shown thus
- Cement concrete to be constructed shown thus
- Mantle to be constructed shown thus

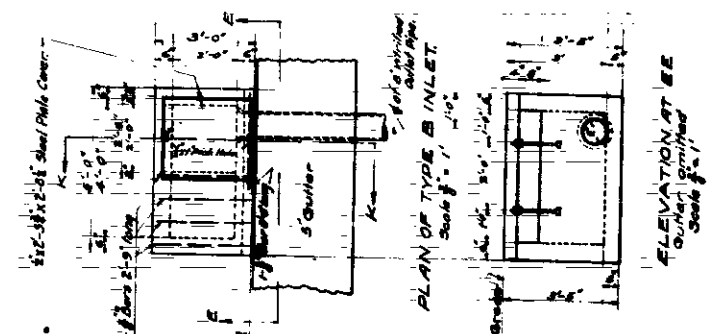
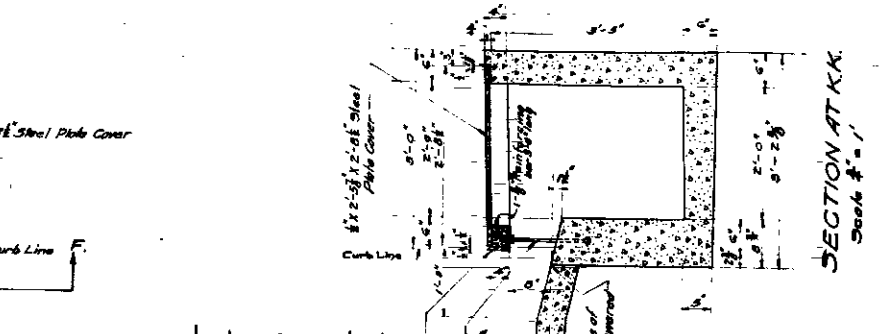
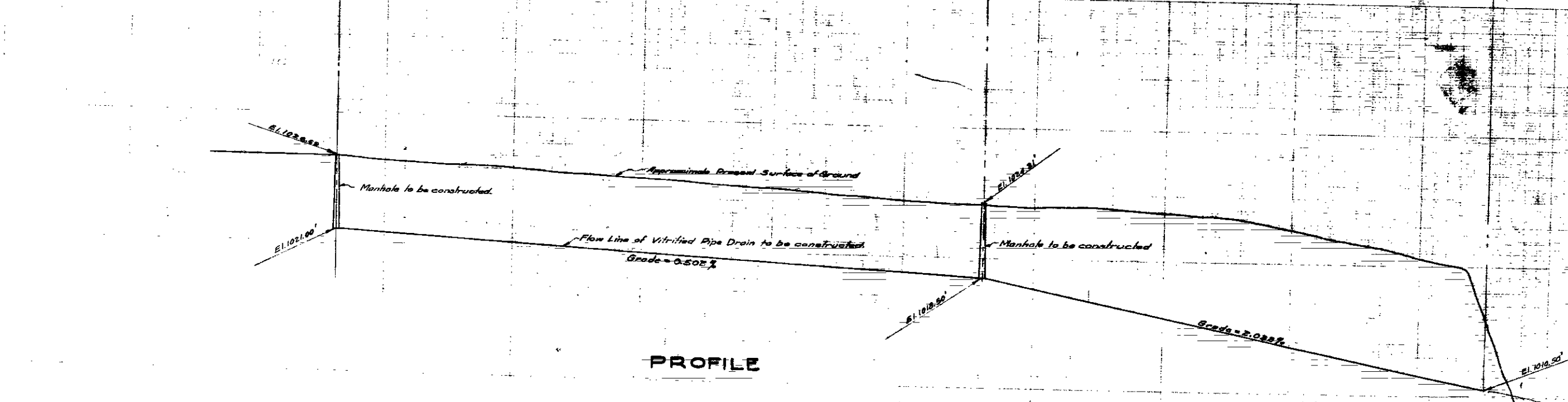
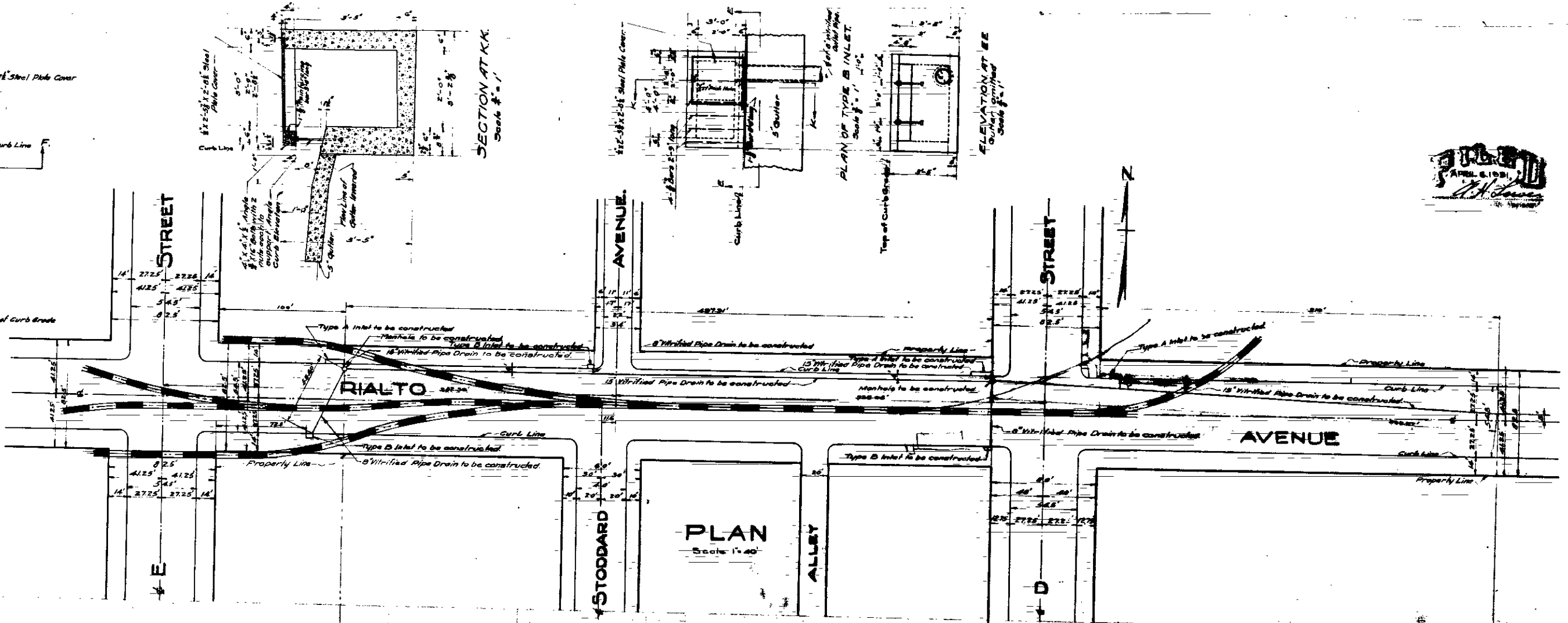
DETAIL OF DRAIN

- Lineal feet of 16" Vitrified Pipe Drain to be constructed
- Lineal feet of 8" Vitrified Pipe Drain to be constructed
- 178 of Mantles to be constructed
- 178 of Type A Inlets to be constructed
- 178 of Type B Inlets to be constructed

PROFILE LEGEND

- Approximate elevation.
- Approximate Present surface of ground shown by Black Lines
- Plan Line of Vitrified Pipe Drain to be constructed shown by
- Scale Horizontal 1" = 40' Vertical 1" = 4'

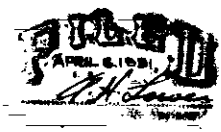
Note: All elevations shown in Red figures are in feet and are above a plane which is 1045.25 feet below the City Bench Mark established by Ordinance No. 383 of the City of San Bernardino, California.



ELEVATION AT EE
 Scale 1/2" = 1'

PLAN
 Scale 1" = 40'

PROFILE



SHEET No. 2
PLAN No. 1055
FOR THE IMPROVEMENT OF
RIALTO AVENUE
 BETWEEN
E STREET AND D STREET
 IN THE
CITY OF SAN BERNARDINO, CALIFORNIA.

MARCH 1931. A. K. Jones
 City Engineer

PLAN ADOPTED APRIL 20, 1931.

TITLE TO STREET
 See Sheet No. 1 this plan.

GRADE ESTABLISHMENT
 See Sheet No. 1 this plan.

LEGEND

- or in these feet or inches
- R means foot or feet
- W means inches
- S means center line
- Railroad and Electric car tracks shown thus in plan
- Vitrified Pipe drain to be constructed shown thus
- Type A Inlet to be constructed shown thus
- Cement concrete to be constructed shown thus
- Mantle to be constructed shown thus

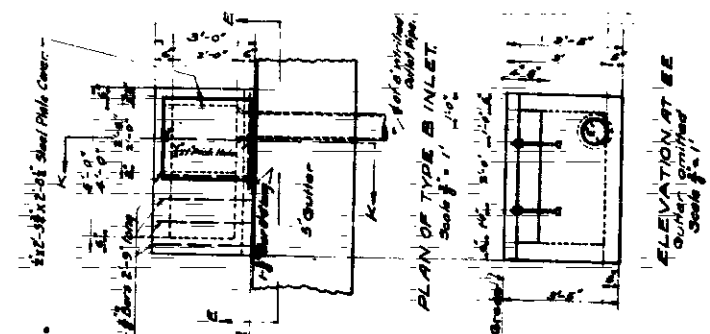
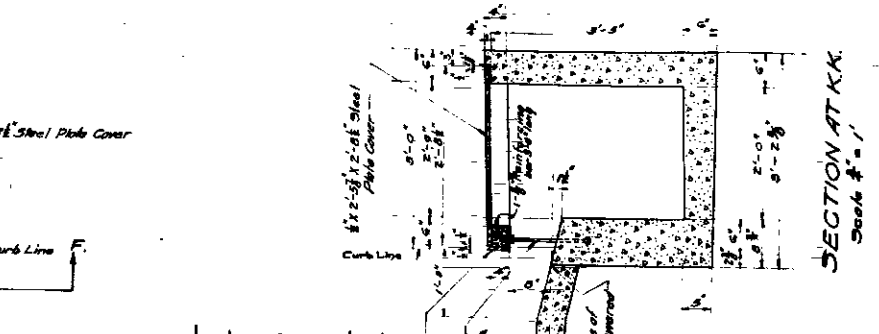
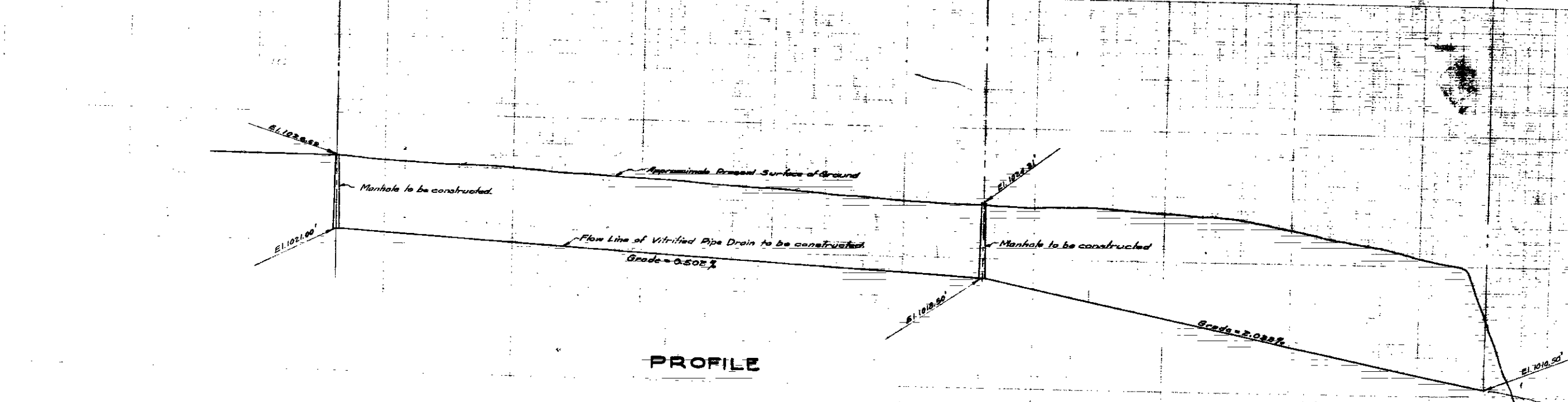
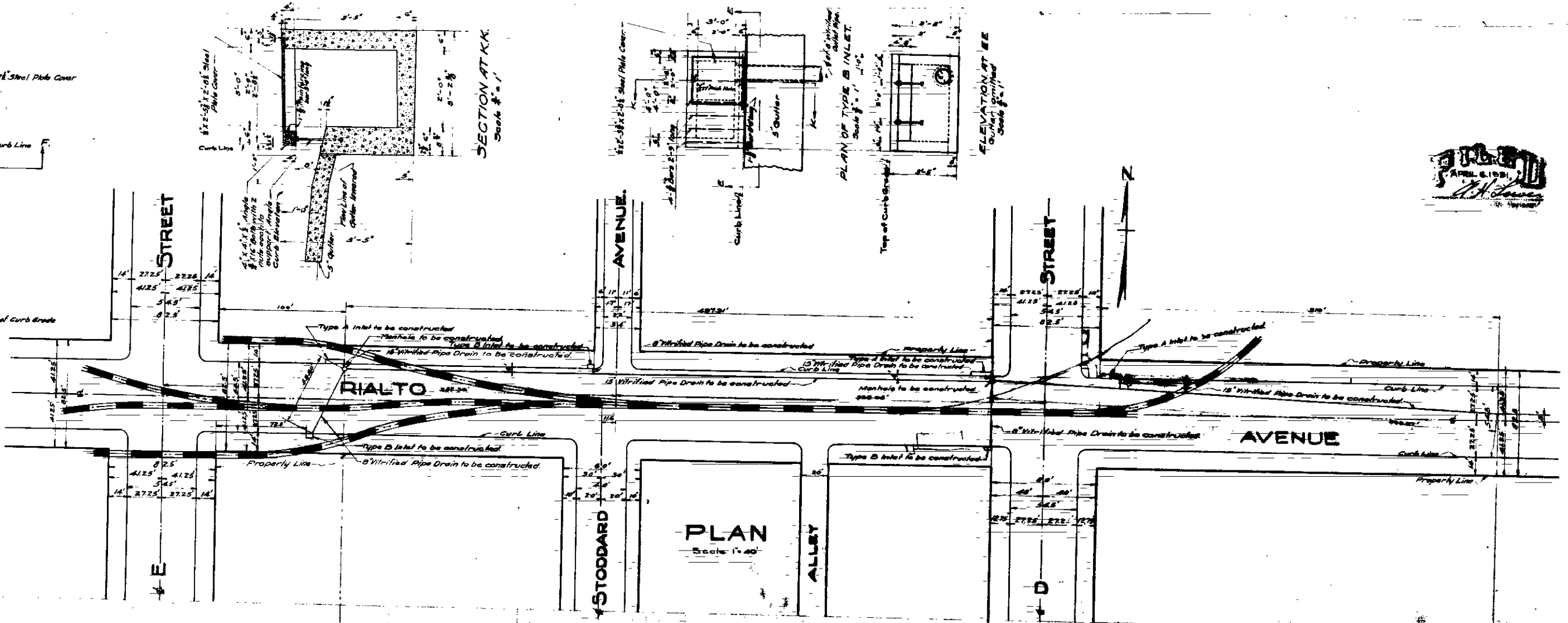
DETAIL OF DRAIN

- Lineal feet of 16" Vitrified Pipe Drain to be constructed
- Lineal feet of 8" Vitrified Pipe Drain to be constructed
- 178 of Mantles to be constructed
- 178 of Type A Inlets to be constructed
- 178 of Type B Inlets to be constructed

PROFILE LEGEND

- Approximate elevation.
- Approximate Present surface of ground shown by Black Lines
- Plan Line of Vitrified Pipe Drain to be constructed shown by
- Scale Horizontal 1" = 40' Vertical 1" = 4'

Note: All elevations shown in Red figures are in feet and are above a plane which is 1045.25 feet below the City Bench Mark established by Ordinance No. 383 of the City of San Bernardino, California.



PLAN
 Scale 1" = 40'

PROFILE